

Ambersil FLAW DETECTORS

By CRC Industries 

FLAW DETECTOR: CLEANER 1



SOLVENT CLEANER FOR PREPARATION

A fast drying cleaner for the removal of all kinds of contaminants on the surface to be inspected. Serves as a preparation of the surface before inspection with dye penetrant.

- Rapid dry, solvent cleaner
- Leave surfaces clean & dry
- Removes contamination including; metal working fluid, anti-corrosion coatings, oil & grime



MATERIALS COMPATIBILITY
EASE OF USE
FLAMMABILITY
POST-PROCESS RESIDUE



FLAW DETECTOR: PENETRANT 2



DYE PENETRANT FOR FLAW IDENTIFICATION

Red coloured, water washable penetrant for non-destructive testing of metal surfaces. The penetrant wicks into tiny flaws within 10 minutes. Excess penetrant should be removed before using the developer.

- Highly visible red dye
- Wicks in to defects down to 20µm
- Very easy to use & cost effective



MATERIALS COMPATIBILITY
EASE OF USE
FLAMMABILITY
POST-PROCESS RESIDUE



FLAW DETECTOR: DEVELOPER 3



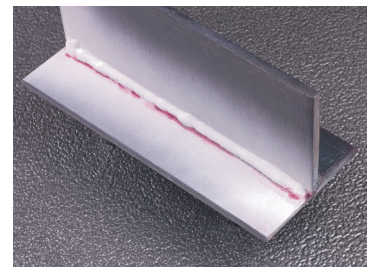
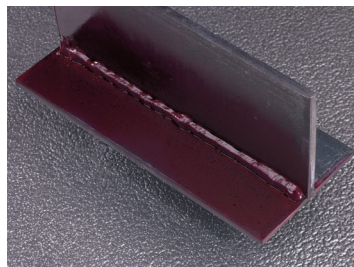
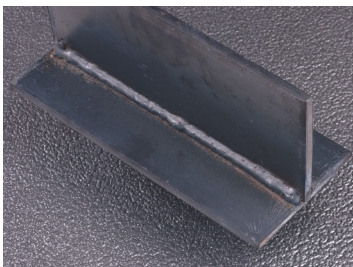
HIGH CONTRAST POWDER DEVELOPER

Enhances and makes each trace of Penetrant visible once applied and left for at least 7 minutes. Post cleaning of the inspected area can be done with the Cleaner.

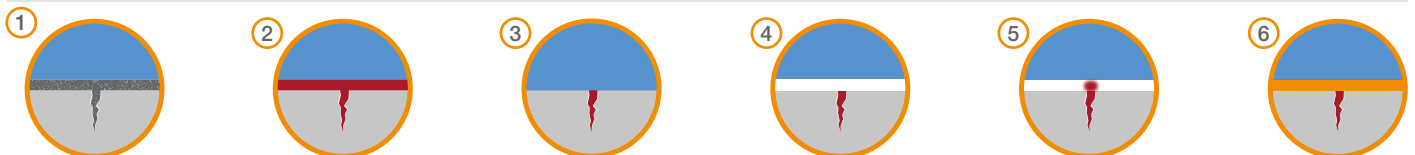
- High contrast and easy to use
- Identifies defects as small as 20µm
- Easily removed with the 'cleaner'



MATERIALS COMPATIBILITY
EASE OF USE
FLAMMABILITY
POST-PROCESS RESIDUE



HOW TO USE THE FLAW DETECTOR RANGE



1. The area to be checked must be thoroughly cleaned. Liberally apply Flaw Detector Cleaner, allow to dry.
2. Spray a light, even film of penetrant on surface. Allow to penetrate for 10 to 20 minutes.
3. Wipe excess Penetrant off with a lint-free cloth dampened with Flaw Detector Cleaner. Allow cleaner to evaporate.
4. Shake the can of Developer thoroughly prior to use. Apply a light, homogeneous coating from a distance of about 20cm. Avoid any excess as it may mask the finest flaws. Allow to develop for at least 7 minutes.
5. Defects appear as red spots or lines on a white background. The speed of appearance, the shape and dimensions can give information on the nature of the defects. Clean the test area with Flaw Detector Cleaner.
6. If necessary, apply an anti-corrosion product, such as: Ambersil Corrosion Inhibitor.