

Safety Steps To Follow Prior To Applying Cor-Ban® 23 Enhanced Dye:

- 1.) Always refer to the safety data sheet (SDS) prior to applying **Cor-Ban® 23 Enhanced Dye** if you have any questions regarding the following information about this product.
 - * Hazardous Ingredients
 - * First Aid Measures
 - * Personal Protection (Controlling Exposure, ect)
 - * Toxicological Information
 - * Regulatory and other questions you may have about this product
- 2.) Always wear chemical resistant gloves, a protective suit, an apron, boots, a respirator, a half-face mask with organic vapor cartridges, and goggles to prevent **Cor-Ban® 23 Enhanced Dye** from making contact with the skin and eyes and from inhaling fumes especially if the ventilation where **Cor-Ban® 23 Enhanced Dye** is applied is insufficient and if **Cor-Ban® 23 Enhanced Dye** is atomized.
- 3.) Make sure there is proper airflow in the area where **Cor-Ban® 23 Enhanced Dye** will be applied.
- 4.) Make sure there are no combustible materials or sources, sparks, open flames, hot surfaces, or other heat and fire ignition sources in the area where **Cor-Ban® 23 Enhanced Dye** will be applied.

Procedures To Follow Prior To Applying Cor-Ban® 23 Enhanced Dye:

- 1.) Make sure that primers are cured prior to applying **Cor-Ban® 23 Enhanced Dye**.
- 2.) Make sure that any sealants that are applied in a given area are cured according to the recommendations and instructions of the manufacturer prior to applying **Cor-Ban® 23 Enhanced Dye**.
- 3.) Vacuum and wipe surfaces so that moisture and other foreign material that is on them can be removed.
- 4.) Vacuum and/or wipe surfaces as necessary to remove moisture and other excessive foreign material from surfaces that will be coated with **Cor-Ban® 23 Enhanced Dye**. Solvents that can be used for cleaning those surfaces include:
 - * **Sur-Prep 3167**
 - * **Sur-Prep 3160**
 - * **D-5640NS / ZC-640**

Do not use Isopropyl alcohol and acetone to wipe and clean the surface.



- 5.) If the sprayed form of **Cor-Ban® 23 Enhanced Dye** shows fisheyes, separations, or anything that prevents it from being homogeneous and free of voids, then the surface is not clean and needs to be vacuumed and/or wiped again.

Masking Procedures To Follow Prior To Applying Cor-Ban® 23 Enhanced Dye:

1.) Mask areas that will not to be coated, such as:

- * Electrical Connectors
- * Pins and Joints In Sliding Surface Contact
- * Control Cables
- * Pulley and Quadrant Cable Grooves
- * Bushing and Bearings For All Types, which includes lined Teflon
- * Silicone or Rubber Seals
- * High Temperature Areas
- * Wire Bundles
- * Lubricated Surfaces (i.e Hydraulic Actuator Pistons)
- * Drain Valves
- * Oxygen System Components (i.e. Bottles, Pressure Metering and Indicating Equipment and Connections)



Methods For Applying Cor-Ban® 23 Enhanced Dye:

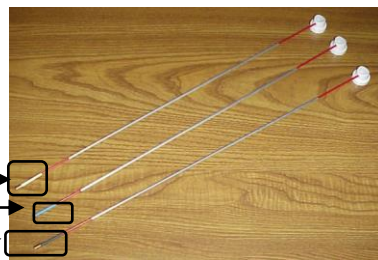
1.) Use the following equipment for applying Cor-Ban® 23 Enhanced Dye.

- * HVLP Guns
- * Airless Spray Equipment
- * Aerosol Cans
- * **Formit®** Extension Wands-For use with all **Zip-Chem®** aerosols to reach difficult to access areas, such as stringer edges.

HLVP Gun



Formit® 360° Spray (White Tube), Fan Spray (Blue Tube), 180° Spray (Black Tube) Wands



- * **Formit®** 360° Spray (White Tube) Wand
- * **Formit®** Fan Spray (Blue Tube) Wand
- * **Formit®** 180° Spray (Black Tube) Wand

Formit® 360° Spray
Demonstration Video



Formit® Fan Spray
Demonstration Video



Formit® 180° Spray
Demonstration Video



Cor-Ban® 23 Enhanced Dye Product Information and Benefits:

Cor-Ban® 23 Enhanced Dye is a long lasting, high penetrating and water displacing corrosion inhibiting compound (CIC) that has a stronger dye than **Cor-Ban® 23** and has a very low dry film weight that is <0.3 mil (8 microns) required to surpass specification.

Cor-Ban® 23 Enhanced Dye has a thin and detectable film and offers a fast dry time as well as inhibition. **Cor-Ban® 23 Enhanced Dye** has a low toxicity level and is free of chromates and heavy metals. **Cor-Ban® 23 Enhanced Dye** will not crack nor flake in temperatures as low as -65°F (-54°C). **Cor-Ban® 23 Enhanced Dye** is also non-tacky film that does not sag. **Cor-Ban® 23 Undyed** can withstand salt spray for >3000 hours.

Areas Where Cor-Ban® 23 Enhanced Dye Should Be Applied:

1.) Cor-Ban® 23 Enhanced Dye should be applied on:

- * Upper Edge Floor Beams
- * Wheel Wells
- * Pressure Deck
- * Center Wing Sections
- * High Profile Aircraft Substrates



Center Wing Section



Wheel Well

Tips For Applying Cor-Ban® 23 Enhanced Dye:

Cor-Ban® 23 Enhanced Dye is a non-decorative coating with a very light amber appearance. Focus the application process of **Cor-Ban® 23 Enhanced Dye** on all faying surfaces to ensure joint penetration. Once **Cor-Ban® 23 Enhanced Dye** has been focused on faying surfaces, then coat the entire area before moving on to the next section.

Inspect the surface for proper coating under stringers, formers, and other structures that are not in the line of sight.



The applied **Cor-Ban® 23 Enhanced Dye** coating should be continuous and free of voids. Runs drips, sags, etc, are allowed provided that the drain holes and cross drains for where **Cor-Ban® 23 Enhanced Dye** should drain out of are not blocked. If the drain holes or cross drains become blocked, then wipe up the excess **Cor-Ban® 23 Enhanced Dye** using clean, dry gauze or rags.

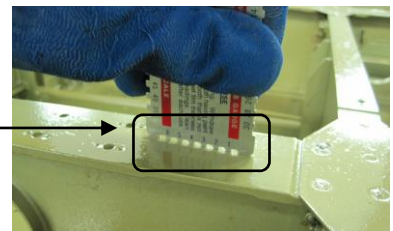
The **Cor-Ban® 23 Enhanced Dye** material will exhibit slight sags or wavy material lines on inclined surfaces in some situations. Immediate attention with a paint brush, however, will eliminate thick runs and sags. Extremely thick areas or puddles need to be wiped up quickly using solvents that are listed below in the removal instructions.

Thickness For Cor-Ban® 23 Enhanced Dye Including Tips For Measuring That Thickness:

The application thickness of **Cor-Ban® 23 Enhanced Dye** should be approximately 0.50 mils (13 microns) dry. For measuring the wet film thickness of **Cor-Ban® 23 Enhanced Dye**, use protection for your hand so that you can push **Zip-Chem®'s Wet Film Thickness Gauge** as shown below into the **Cor-Ban® 23 Enhanced Dye** material via hand after the **Cor-Ban® 23 Enhanced Dye** has been allowed to flow for a few minutes.



Wet Film Thickness Gauge Fingers



The thickness of the **Cor-Ban® 23 Enhanced Dye** can be determined by the visible tracks in the wet film that are left by the gauge fingers of the **Wet Film Thickness Gauge** as shown in the picture to the right of the **Wet Film Thickness Gauge** image. The dry film thickness of **Cor-Ban® 23 Enhanced Dye** may be verified using paint thickness instruments.

Cor-Ban® 23 Enhanced Dye Instruction Manual

Tips For Drying Cor-Ban® 23 Enhanced Dye:

1.) **Cor-Ban® 23 Enhanced Dye** typically will dry to a hard, tack free film in 45 minutes to 2 hours. These dry times should be accurate provided that adequate ventilation was utilized and that the **Cor-Ban® 23 Enhanced Dye** material was applied within the thickness range that was called out in the paragraph for the thickness that the dry material of **Cor-Ban® 23 Enhanced Dye** should be applied at under the Tips For Measuring The Thickness of **Cor-Ban® 23 Enhanced Dye** section.

The speed at which **Cor-Ban® 23 Enhanced Dye** dries and cures at is also influenced by:

- * Temperature
- * Humidity

2.) In some areas of application, the **Cor-Ban® 23 Enhanced Dye** coating should be cured sufficiently to prevent it from being transferred if it comes into contact with products and surfaces, such as insulation blankets.

Temperature For Applying Cor-Ban® 23 Enhanced Dye:

The temperature that **Cor-Ban® 23 Enhanced Dye** needs to be applied at should fall between 40°F and 100°F (4°C and 38°C).

Cor-Ban® 23 Enhanced Dye Product Packaging Pictures, Zip-Chem® Product Packaging Part Numbers, and Other Materials To Purchase :

Cor-Ban® 23 Enhanced Dye

- *Case of 16 fl oz (473 mL) Aerosols-**011321**
- *5 Gallon (18.9 Liter) Pail-**011209**
- *Specialized forms of packaging available upon request

Wet Film Thickness Gauge

- ***100266**

Sur-Prep® 3160

- *Case of 12 of 16 fl oz (473 mL) Aerosols-**010938**
- *Case of 4 each Gallon (4 each of 3.8L) Cans-**008578**
- *5 Gallon (18.9 Liter) Pails-**008579**
- *55 Gallon (208 Liter) Drum-**008580**
- *Case of 6 Canisters of Towelettes-**100026**
- *Case of 100 Individual Towelettes-**011844**
- *Specialized forms of packaging available upon request

Zip-Strip™ 125M

- *Case of 12 of 16 fl oz (473 mL) Aerosols-**102614**
- *Case of 4 each Gallon (4 each of 3.8L) Cans-**102608**
- *5 Gallon (18.9 Liter) Pails-**102609**
- *55 Gallon (208 Liter) Drum-**102610**
- *Specialized forms of packaging available upon request

Sur-Prep® 3167

- *Case of 12 of 16 fl oz (473 mL) Aerosols-**103765**
- *Case of 4 each Gallon (4 each of 3.8L) Cans-**103762**
- *5 Gallon (18.9 Liter) Pails-**103763**
- *55 Gallon (208 Liter) Drum-**103764**
- *Specialized forms of packaging available upon request

D-5640NS/ZC-640

- *Case of 12 of 16 fl oz (473 mL) Aerosols (**D-5640NS**)-**002070**
- *Case of 4 each Gallon (4 each of 3.8L) Cans (**ZC-640**)-**009430**
- *5 Gallon (18.9 Liter) Pails (**ZC-640**)-**002155**
- *55 Gallon (208 Liter) Drum (**ZC-640**)-**008181**
- *Special forms of packaging available upon request (**ZC-640**)

Cor-Ban® 23

- *Case of 12 of 16 fl oz (473 mL) Aerosols-**008017**
- *Case of 12 each Quart (946 mL)-**010097**
- *Case of 4 each Gallon (4 each of 3.8 Liter) Cans-**009401**
- *5 Gallon (18.9 Liter) Pail-**008015**
- *55 Gallon (208 Liter) Drum-**008016**
- *Specialized forms of packaging available upon request

Formit® Wands (12 Assemblies Per Package)

- | | |
|----------------------------|--|
| *Formit®-18-Fan-006224 | *Formit®-36-360-009131 |
| *Formit®-18-180-006226 | *Formit®-48-360 with metal sleeve-009132 |
| *Formit®-18-360-006227 | *Formit®-48-360 without metal sleeve-100424 |
| *Formit®-18-STD-FOG-008352 | *Formit®-48-Fan-008460 |
| *Formit®-18-90-FOG-008353 | *Formit® Sample Pack (3 each of Formit®-18-Fan, Formit®-18-180, Formit®-18-360, Formit®-18-STD-FOG-100107) |
| *Formit®-29-360-101321 | |

Cor-Ban® 23 Enhanced Dye Product Pictures and Zip-Chem®

Product Packaging Part Numbers continued on next page



Cor-Ban® 23 Enhanced Dye Instruction Manual

Cor-Ban® 23 Enhanced Dye Product Packaging Pictures, Zip-Chem® Product Packaging Part Numbers, and Other Materials To Purchase :

Cor-Ban® 23 Enhanced Dye Product Pictures and **Zip-Chem®** Product Packaging Part Numbers Continued From page 4

Tin Foil	250 Masking Tape Tan (Can Be Certified TO SAE-AMS3721)	Gloves	Suit	Apron	Boots	Organic Vapor Cartridges	Goggles
Airless Spray Equipment	HVLP Guns						



← *16 Fluid Ounce (473 mL) Aerosol

Cor-Ban® 23 NSN: 8030-01-531-7361

Sur-Prep® 3160 NSN: 6850-01-633-9843 (16 fl oz (473 mL) Aerosol); **D-5640NS NSN:** 8030-01-597-6958 (16 fl oz (473 mL) Aerosol)

Zip-Strip™ 125M NSN's: 6850-01-695-8514 (5 Gallon (18.9 Liter) Pail), 6850-01-707-8887 (16 fl. oz (473 mL) Aerosol)

Formit® NSN's: 4730-01-612-9914, NSN: 4730-01-661-8773 (**Formit®-18-Fan**); 6850-01-492-2942 (**Formit®-18-360**); 4730-01-632-0156 (**Formit®-18-STD-FOG**); 6850-01-517-0963 (**Formit®-18-90-FOG**); 1560-01-658-8943 (with metal sleeve), 4730-01-659-5461 (without metal sleeve) (**Formit®-48-360**); 4730-01-632-0157 (**Formit®-48-Fan**)

For application questions regarding **Cor-Ban® 23 Enhanced Dye**, contact **Zip-Chem® Aviation Products** at (1) 408 782 2335 or zipchem@addevmaterials.com.